

# FasseTrack

ASSET MANAGEMENT SYSTEM

A powerful asset management package, making asset management easy

## FasseTrack Asset Management System

FasseTrack is a powerful, multi-user asset management system for electronic tracking of fixed assets within each area of your operations. Assets are uniquely identified by user-assigned tag numbers, which may be generated on bar code labels for subsequent scanning by bar code readers and portable data collection terminals. FasseTrack keeps you abreast of the status of every asset in one or more organizations.

### Flexibility

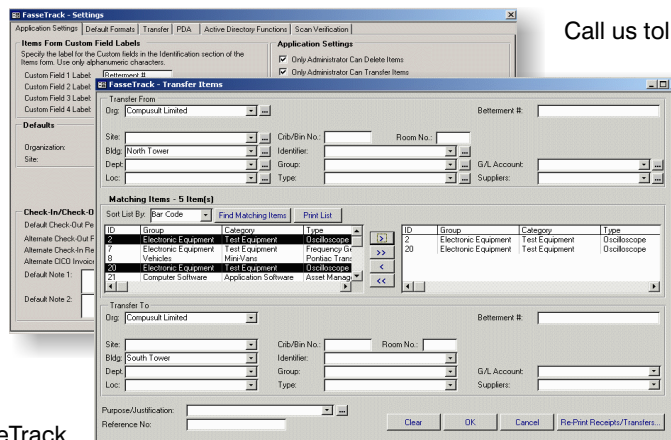
FasseTrack is a flexible and user-friendly system. It simplifies identifying, locating and tracking all assets, from computers to general office equipment to furniture. In just a keystroke, FasseTrack lets you:

- Track assets according to physical identification, acquisition, disposal, depreciation, organization, location, and consignee details, with all key information on a single screen
- Assign and re-assign assets individually or by group, category, type, identifier, status, organization, location and consignee
- Define and create custom fields relevant to your needs.
- Produce a wide variety of pre-defined and custom reports
- Document asset maintenance details, including individual and cumulative maintenance costs, work orders, etc.
- Transfer asset data to and from other software applications and portable data collection terminals, including FasseTrack Mobile, CompuSult's mobile system for asset tracking.
- Maintain a complete and secure audit trail of all transactions.

collection terminal that uses ASCII files and a serial interface

### FasseTrack Check-In/Check-Out Customization

In addition to the many features and flexibility built into FasseTrack Check-In/Check-Out, there may be other requirements that your organization especially needs. No problem. CompuSult can produce custom versions of FasseTrack Check-In/Check-Out to accommodate any desired functionality. We also provide training, data conversion, and technical support services.



Call us toll free at **1-888-388-8180** or send e-mail to [info@fassetrack.com](mailto:info@fassetrack.com) for more details or a free quotation.

### System Requirements

FasseTrack Check-In/Check-Out is designed to run on computer systems with the following minimum configuration:

- Microsoft Windows 98, NT 4.0 (Service Pack 4.0 or later), 2000 or XP
- Intel Pentium III or better processor
- 128 MB of available RAM
- 357 MB of available hard disk drive space for the FasseTrack Single User Standard Version
- 101 MB of available hard disk drive space for the FasseTrack Server Standard Version
- 256 Mb of available hard disk drive space for the FasseTrack Client Standard Version
- 256-color monitor capable of 800 x 600 resolution
- CD-ROM drive (for installation only)

Licensing and pricing information for FasseTrack Check-In/Check-Out and various options and accessories are available upon request.

### Full Bar Code Capability

FasseTrack CICO features comprehensive bar code support, including:

- Supports RFID tag reading and bar code scanning, including the state-of-the-art wireless portable IDBlue RFID reader
- Data entry and searching using bar code scanners and readers
- Compatibility with almost any type of bar code
- Bar code label printing on standard laser and ink jet printers
- Direct integration with FasseTrack Mobile
- Data transfers to and from any third-party portable data

CompuSult also offers custom versions of FasseTrack to meet any specialized requirements you may have. Contact us today to discuss your particular item tracking needs.

E-mail: [info@FasseTrack.com](mailto:info@FasseTrack.com)

Web: [www.FasseTrack.com](http://www.FasseTrack.com)

# FasseTrack

ASSET MANAGEMENT SYSTEM

A powerful asset management package

## FasseTrack Asset Management System

FasseTrack is a powerful, multi-user asset management system for electronic tracking of fixed assets within each area of your operations. Assets are uniquely identified by user-assigned tag numbers, which may be generated on bar code labels for subsequent scanning by bar code readers and portable data collection terminals. FasseTrack keeps you abreast of the status of every asset in one or more organizations.

### Flexibility

FasseTrack is a flexible and user-friendly system. It simplifies identifying, locating and tracking all assets, from computers to general office equipment to furniture.

In just a keystroke, FasseTrack lets you:

- Tools, including consumable hardware and materials
- Files and folders
- Software and books in your company library
- Electronic equipment, including pagers, computers, etc.
- Rental, loan, and demo items

In just a keystroke, FasseTrack Check-In/Check-Out lets you:

- Track items according to physical identification, acquisition, location, and check-in/check-out details, with all key information displayed on a single screen
- Assign and re-assign items individually or by group, category, type, identifier, status, and location.
- Define custom data fields
- Produce a wide variety of pre-defined and custom reports, including check-in/check-out activity and history, overdue items, numbers of items checked out, current item status, etc.
- Transfer item data to and from other software applications
- Maintain a complete and secure audit trail of all transactions

### Full Bar Code Capability

FasseTrack CICO features comprehensive bar code support, including:

- Supports RFID tag reading and bar code scanning, including the state-of-the-art wireless portable IDBlue RFID reader
- Data entry and searching using bar code scanners and readers
- Compatibility with almost any type of bar code
- Bar code label printing on standard laser and ink jet

printers

- Direct integration with FasseTrack Mobile
- Data transfers to and from any third-party portable data collection terminal that uses ASCII files and a serial interface

### FasseTrack Check-In/Check-Out Customization

In addition to the many features and flexibility built into FasseTrack Check-In/Check-Out, there may be other requirements that your organization especially needs. No problem. Compusult can produce custom versions of

FasseTrack Check-In/Check-Out to accommodate any desired functionality.

We also provide training, data conversion, and technical support services.

Call us toll free at **1-888-388-8180** or send e-mail to [info@fassetrack.com](mailto:info@fassetrack.com) for more details or a free quotation.

### System Requirements

FasseTrack Check-

In/Check-Out is designed to run on computer systems with the following minimum configuration:

- Microsoft Windows 98, NT 4.0 (Service Pack 4.0 or later), 2000 or XP
- Intel Pentium III or better processor
- 128 MB of available RAM
- 357 MB of available hard disk drive space for the FasseTrack Single User Standard Version
- 101 MB of available hard disk drive space for the FasseTrack Server Standard Version
- 256 Mb of available hard disk drive space for the FasseTrack Client Standard Version
- 256-color monitor capable of 800 x 600 resolution
- CD-ROM drive (for installation only)

Licensing and pricing information for FasseTrack Check-In/Check-Out and various options and accessories are

Compusult also offers custom versions of FasseTrack to meet any specialized requirements you may have. Contact us today to discuss your particular item tracking needs.

E-mail: [info@FasseTrack.com](mailto:info@FasseTrack.com)

Web: [www.FasseTrack.com](http://www.FasseTrack.com)

