

FasseTrack

Get on the FasseTrack to Asset Tracking & Inventory Control!



FasseTrack

FasseTrack is fielded, Commercial Off-the-Shelf (COTS) software that provides comprehensive tracking of any number of different physical assets and other items with full barcode and RFID support. Compusult has supplied FasseTrack to many different clients for almost two decades, including the U.S. Department of Defense (DoD) and Federal and State Government agencies to track buildings and their contents, property book items, warehouse inventory, weapons, equipment, and more.

FasseTrack Check-In/Check-Out

Electronic tracking of items and consumables in any organization.

FasseTrack Check-In/Check-Out automatically records check-in and check-out dates. It also fully supports barcode scanning to select and search for items, individuals and other information and provides reporting capabilities, as well as date-related reminder functions.

FasseTrack Asset Management

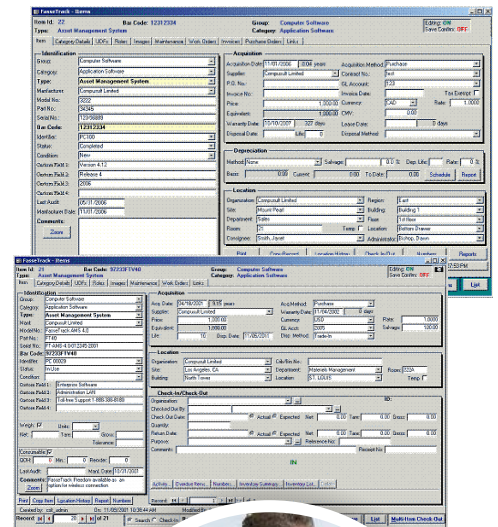
A powerful, multi-user system for the electronic tracking of fixed assets.

FasseTrack AMS simplifies identifying, locating and tracking all assets. FasseTrack maintains comprehensive information on more than 50 key parameters for each asset, including physical identification, acquisition, depreciation, location, consignee and other details.

FasseTrack Inventory Control

A detailed stock room and inventory control system.

FasseTrack Inventory Control System (ICS) provides facilities for managing inventory, stock allocations, stock replenishment, vendor details, items ordered, item prices and other related data in an easy-to-use, integrated environment. It fully supports barcode scanning to select, search and update inventory items and also provides a variety of useful reports.



FasseTrack Freedom

Manage and track your assets anytime, anywhere.

FasseTrack Freedom offers users the same ease-of-use and direct control over data holdings as FasseTrack, with the added benefit of remote, wireless and/or Web-based access. It can be used to remotely manage and track data for applications such as Item Check-In/Check-Out, Asset Management and Inventory Control.



COMPUSULT

fassetrack.com

**Cost-Effective, Efficient and Accurate
Data Collection with FasseTrack
Software on a Mobile Device.**



FasseTrack Mobile

FasseTrack Mobile is a portable data management system for electronic data collection and tracking of items within your organization. The latest version now runs on IOS and Android based phones and tablets, as well as Janam and Aceeca PDTs. It also supports RFID tag reading and barcode scanning.

FasseTrack Mobile can be used for many different item tracking and data collection applications, including:

- Item Check-In/Check-Out
- Asset Tracking
- Inventory Control

FasseTrack Mobile Functions

FasseTrack Mobile allows you to:

- Support RFID tag reading and bar code scanning.
- Transfer all or selected data from FasseTrack on a Desktop PC or server to a compatible mobile device.
- Scan and verify items and/or update the data on the mobile device based on information you gather in one or more locations.
- Transfer verified and new data in wireless or batch mode to the main FasseTrack database.

FasseTrack Mobile grants access to all functions through a user-friendly interface and also allows you to use other applications available for the mobile device.

FasseTrack Mobile Customization

In addition to the many features and flexibility built into FasseTrack Mobile, there may be other requirements that your organization especially needs. Compusult can produce custom versions of FasseTrack Mobile to accommodate any desired functionality. We also provide training, data conversion and technical support services.



To learn more about FasseTrack
Visit our Web Site at fassetrack.com or
email: info@fassetrack.com



40 Bannister Street Mount Pearl, Newfoundland, Canada
(709) 745-7914 Fax: (709) 745-7927

Internet: www.compusult.net

Copyright © 2016 Compusult All rights reserved.